



[www.gorbel.com](http://www.gorbel.com)

- Who we are
- What we do
- Our products
- Current open roles

# GORBEL® - STRATEGY MAP

## ALWAYS “A CLASS ABOVE”

We develop gravity-defying solutions which improve people's lives. Informed by superior customer intimacy, our passionate and talented people provide extraordinary customer experiences – inside and out. We optimize our profitability so we can continually invest in, develop and grow our people and portfolio of business lines in order to thrive in a global market.

**GORBEL®**  
A CLASS ABOVE



WHY WE'RE HERE  
& WHERE WE'RE HEADED

**MISSION**  
We improve people's lives

**VISION**  
We defy gravity. Literally and in spirit.



FUNDING OUR FUTURE

**PROFITABILITY**

**REINVESTMENT**



WHY CUSTOMERS  
CHOOSE US

**SPEED**

**RESPONSIVENESS**

**RELIABILITY**



DIVERSE BUSINESS  
LINE PORTFOLIO

**JIB  
CRANES**

**SAFEGAIT**

**TETHER TRACK**

**G-FORCE**

**WORK STATION  
CRANES**

**HOISTS**

**CT**

**NEW  
SOLUTIONS**



EXCELLENCE  
IN EXECUTION

**BUSINESS  
DEVELOPMENT  
EXCELLENCE**

**ORDER  
FULFILLMENT  
EXCELLENCE**



GROWING &  
IMPROVING

**PEOPLE  
STRATEGY**

**LEARNING & AGILE  
ORGANIZATION**



OUR FOUNDATION

**INTEGRITY**

**POSITIVE PEOPLE  
IN A POSITIVE ENVIRONMENT**

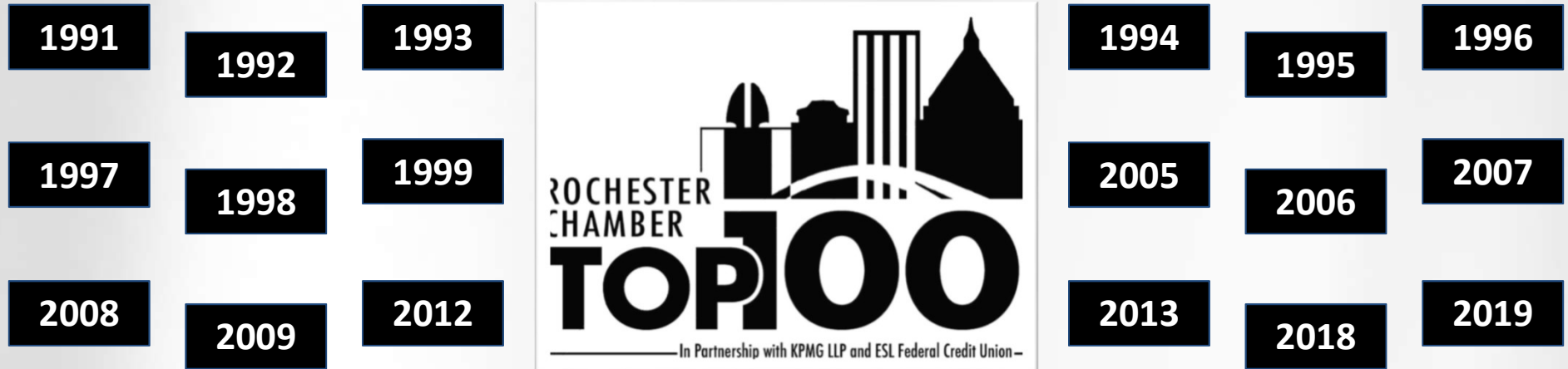
**EXTRAORDINARY CUSTOMER  
EXPERIENCE**

**FUTURE ORIENTED**

**GORBEL®**  
A CLASS ABOVE

# GORBEL® - ROCHESTER CHAMBER TOP 100

**Gorbel®** has been recognized as a Rochester Chamber Top 100 Company 18 times



The Rochester Chamber Top 100 is a program that recognizes the fastest-growing privately owned companies in the Greater Rochester region. To be eligible, businesses must be privately held, headquartered in the nine-county Rochester region, and have earned at least \$1 million in revenue in each of the three most recent fiscal years.

# GORBEL® - 2019 ETHIE AWARD WINNER

**Gorbel®** is proud to announce that we were selected as a  
**WINNER of the 2019 Ethie Award!**



What is the Ethie Award? The Rochester Area Business Ethics Foundation (RABEF) annually creates the opportunity to recognize companies who are living out a commitment to high standards for ethical behavior. The *ETHIE Award* recognizes businesses and organizations that do the right thing through strong ethical foundations, aspirations to high standards of business conduct, and the multifaceted nature of ethics in our daily lives. Each year a list of “finalists” are chosen after an intense and thorough application process which includes input like written testimonials of ethical challenges, how an organization strives to build a culture of ethics, onsite interviews with employees, and more.

**GORBEL®**  
A CLASS ABOVE

# GORBEL® - TODAY

## Gorbel® today:

- Privately owned and founded in 1977 in Fairport, NY
- Manufacturing facilities in New York, Alabama, Arizona, Canada and China
- 600+ employees worldwide
- Gorbel® Industrial product lines include Jib Cranes, Workstation Cranes, Cleveland Tramrail® Patented Track Cranes, Gantries, G-Force® and Easy Arm® Intelligent Lifting Devices, Destuff-IT and Tether Track™ Fall Protection



**GORBEL®**  
A CLASS ABOVE



[www.Gorbel.com](http://www.Gorbel.com)

# Overhead Solutions for Every Application

## CRANES ▶

Serving a wide range of industries and applications, work station and jib cranes offer complete coverage options based on the job being performed.



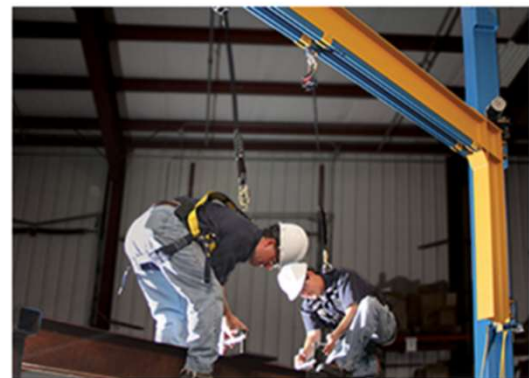
## ERGONOMIC LIFTING ▶

Intelligent Lifting Devices use human intelligence and adaptability for guidance but work is done by the unit. Feel the difference when precise positioning is paramount.



## FALL PROTECTION ▶

Permits full range of motion for workers while offering unsurpassed protection with engineered anchorage points utilizing rigid rail at the core.

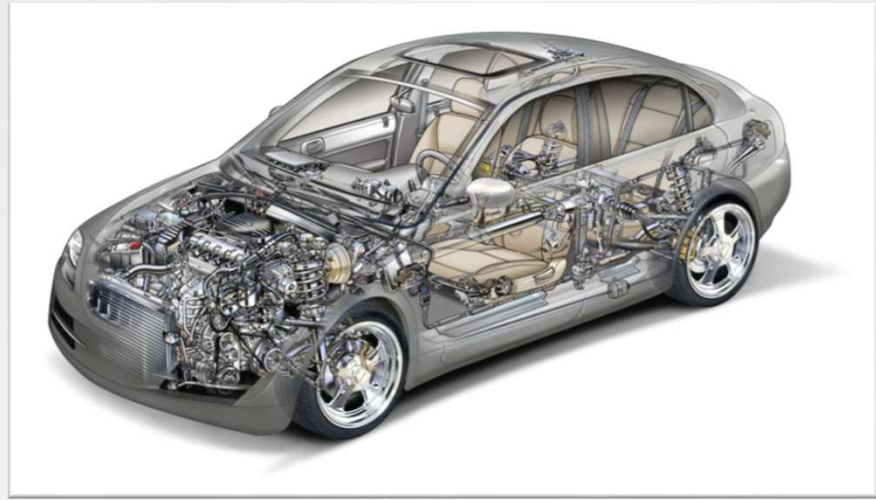


**GORBEL**<sup>®</sup>  
A CLASS ABOVE

# INDUSTRIES WE SERVE



Construction Equipment



Automotive



Manufacturing and Machinery



Pharmaceuticals

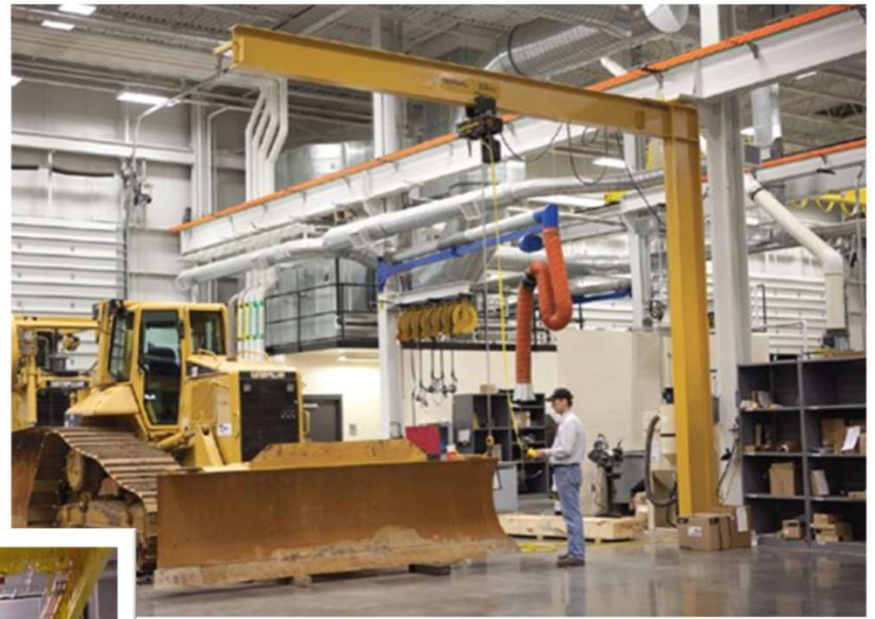


Aerospace

**GORBEL**<sup>®</sup>  
A CLASS ABOVE



# GORBEL® - JIB CRANES



**GORBEL®**  
A CLASS ABOVE

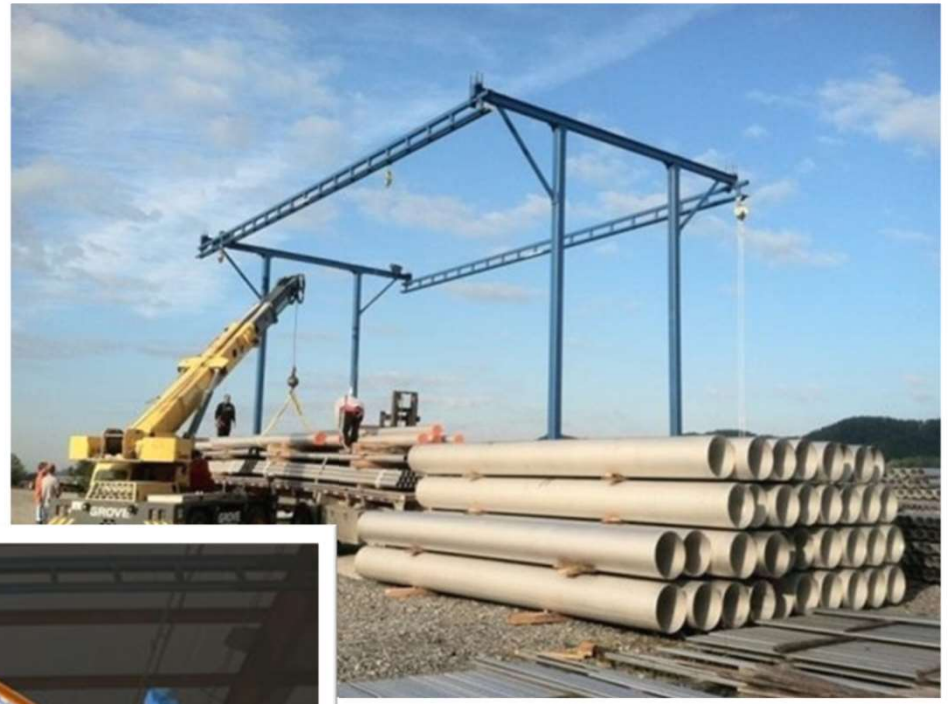
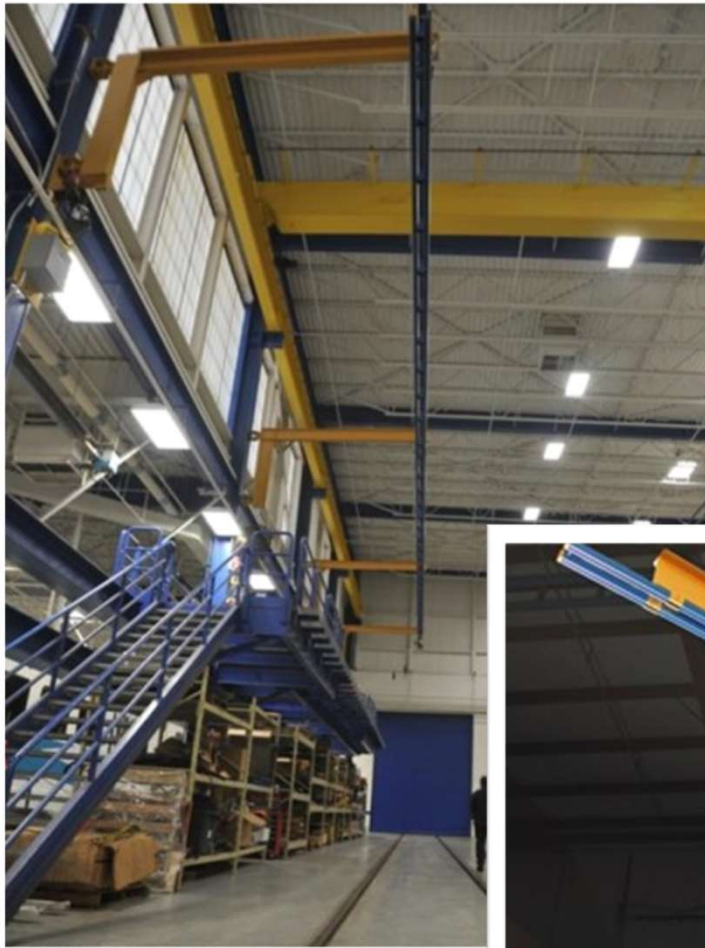


# GORBEL® - WORK STATION CRANES



**GORBEL®**  
A CLASS ABOVE

# GORBEL® - TETHER TRACK™ FALL PROTECTION



**GORBEL®**  
A CLASS ABOVE



# GORBEL® - CLEVELAND TRAMRAIL® PATENTED TRACK



**GORBEL®**  
A CLASS ABOVE

# GORBEL® - G-FORCE® & EASY ARM®



April 5, 2021

**GORBEL®**  
A CLASS ABOVE



# GORBEL® - DESTUFF-IT



**GORBEL®**  
A CLASS ABOVE

# GORBEL® - CURRENT OPEN ROLES

## **Victor, NY [600 Fishers Run]**

- Mechanical Assembler (1<sup>st</sup> shift)
- Welder (1<sup>st</sup> & 2<sup>nd</sup> shift)
- Painter (1<sup>st</sup>, 2<sup>nd</sup> & 3<sup>rd</sup> shift)
- Machine / Saw Operator (2<sup>nd</sup> & 3<sup>rd</sup> shift)
- Parts Washer / Dryer (2<sup>nd</sup> shift)
- Packer (2<sup>nd</sup> shift)
- Production Supervisor (2<sup>nd</sup> shift)

## **Henrietta, NY [1777 E. Henrietta Rd]**

- Mechanical Assembler (1<sup>st</sup> & 2<sup>nd</sup> shift)
- Electrical Technician (1<sup>st</sup> & 2<sup>nd</sup> shift)
- Welder (1<sup>st</sup> & 2<sup>nd</sup> shift)
- Material Handler (1<sup>st</sup> & 2<sup>nd</sup> shift)
- Shipper / Receiver (1<sup>st</sup> & 2<sup>nd</sup> shift)
- Quality Technician (1<sup>st</sup> & 2<sup>nd</sup> shift)
- Production Supervisor (1<sup>st</sup> & 2<sup>nd</sup> shift)

For a listing of all current open jobs and job descriptions please go to [www.Gorbel.com](http://www.Gorbel.com) and select **Careers** at the top of the page.

Max Powell  
Staffing Specialist  
[maxpow@gorbel.com](mailto:maxpow@gorbel.com)  
585-924-6204

Trevor DuPont  
Staffing Specialist  
[tredup@gorbel.com](mailto:tredup@gorbel.com)  
585-924-6139